

## WP 310

WEATHERPROOF GONG BELL

### Description

Weather proof warning gong bell with an terminal chamber. A highly reliable motorized electronic circuit is housed inside the Stainless Steel Gong with rotating spindle. The operating spindle and dish are made out of stainless steel thereby ensuring a long life. The electric circuits are connected to terminals in the terminal chamber. The JB cover is provided with neoprene gasket for reliable weatherproof protection.

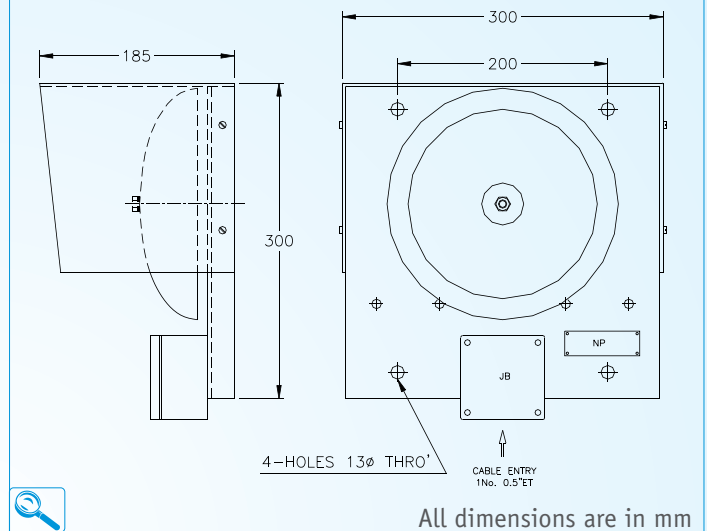
### Mechanical Data

Material	: MS Body & Gong Steel
Weight	: 3 Kg (approx.)
IP Protection	: IP 65 to IS 13947 / 93
Finish	: Anti corrosive Epoxy - Powder Coated
Cable Entry	: 1 x 1/2" ET
Gasket	: Neoprene
Hardware	: Stainless Steel

### Electrical Data

Voltage	: 24 V DC or 110 V / 230 V AC - 50 Hz
Power rating	: 12 Watt
Sound Output	: 108 db
Terminals	: 4 x 4 sq.mm
Earthing	: External : 1 Nos. - M6

GA Drawing



Type of protection	Weatherproof - Wp
Area Classification	IP 65
Apparatus Standard	IS - 13947 / 93
Wattage Rating	12 W

### Salient Features

This unit incorporates a Telephone activated paging with the following facilities.

- A** Xenon Flashing system
- B** Selectable Ringer Sequence
- C** Voice Annunciation through speaker with adjustable Volume control.
- D** Telephone voice in speaker will come on after the Ringer sequence

